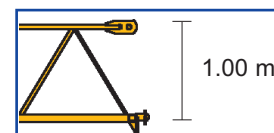
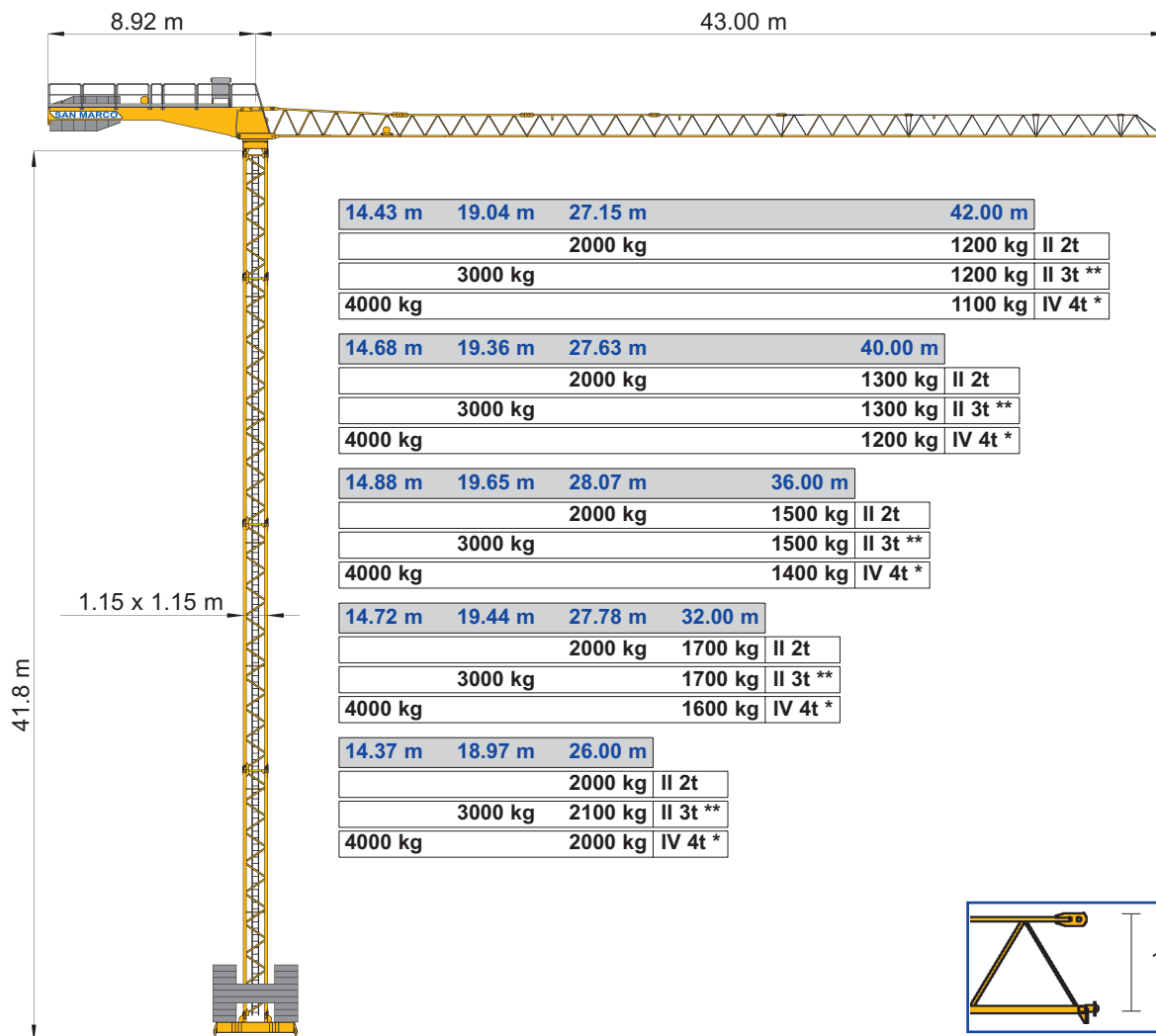


- IT** Gru a torre modulare - Versione City Crane
- UK** Modular tower crane - City Crane Version
- RU** Кран башенный с модульным монтажом версии - Сити Кран

SMT 420

Triverter 444



- IT** Diagrammi di carico
- UK** Loads diagrams
- RU** Диаграмма нагрузки

| m | 14 | 16 | 18 | 20 | 22 | 24 | 26 | 28 | 30 | 32 | 34 | 36 | 38 | 40 | 42 | m |
|---|------|------|------|------|------|------|------|------|------|------|------|------|------|------|------|----|
| | 2.00 | 2.00 | 2.00 | 2.00 | 2.00 | 2.00 | 2.00 | 1.93 | 1.78 | 1.65 | 1.54 | 1.44 | 1.35 | 1.27 | 1.20 | 42 |
| | 2.00 | 2.00 | 2.00 | 2.00 | 2.00 | 2.00 | 2.00 | 1.97 | 1.82 | 1.68 | 1.57 | 1.47 | 1.38 | 1.30 | | 40 |
| t | 2.00 | 2.00 | 2.00 | 2.00 | 2.00 | 2.00 | 2.00 | 2.00 | 1.85 | 1.72 | 1.60 | 1.50 | | | | 36 |
| | 2.00 | 2.00 | 2.00 | 2.00 | 2.00 | 2.00 | 2.00 | 1.98 | 1.83 | 1.70 | | | | | | 32 |
| | 2.00 | 2.00 | 2.00 | 2.00 | 2.00 | 2.00 | 2.00 | | | | | | | | | 26 |

Tiro in II 2000 kg
Single wiring 2000 kg
Двойная запасовка 2000 kg



| m | 14 | 16 | 18 | 20 | 22 | 24 | 26 | 28 | 30 | 32 | 34 | 36 | 38 | 40 | 42 | m |
|---|------|------|------|------|------|------|------|------|------|------|------|------|------|------|------|----|
| | 3.00 | 3.00 | 3.00 | 2.83 | 2.54 | 2.30 | 2.10 | 1.93 | 1.78 | 1.65 | 1.54 | 1.44 | 1.35 | 1.27 | 1.20 | 42 |
| | 3.00 | 3.00 | 3.00 | 2.89 | 2.59 | 2.35 | 2.15 | 1.97 | 1.82 | 1.69 | 1.57 | 1.47 | 1.38 | 1.30 | | 40 |
| t | 3.00 | 3.00 | 3.00 | 2.94 | 2.64 | 2.39 | 2.18 | 2.00 | 1.85 | 1.72 | 1.60 | 1.50 | | | | 36 |
| | 3.00 | 3.00 | 3.00 | 2.90 | 2.61 | 2.36 | 2.15 | 1.98 | 1.83 | 1.70 | | | | | | 32 |
| | 3.00 | 3.00 | 3.00 | 2.82 | 2.53 | 2.30 | 2.10 | | | | | | | | | 26 |

Tiro in II 3000 kg**
Single wiring 3000 kg
Двойная запасовка 3000 kg



| m | 14 | 16 | 18 | 20 | 22 | 24 | 26 | 28 | 30 | 32 | 34 | 36 | 38 | 40 | 42 | m |
|---|------|------|------|------|------|------|------|------|------|------|------|------|------|------|------|----|
| | 4.00 | 3.55 | 3.10 | 2.74 | 2.45 | 2.21 | 2.01 | 1.83 | 1.68 | 1.55 | 1.44 | 1.34 | 1.25 | 1.17 | 1.10 | 42 |
| | 4.00 | 3.62 | 3.16 | 2.79 | 2.50 | 2.25 | 2.05 | 1.87 | 1.72 | 1.59 | 1.47 | 1.37 | 1.28 | 1.20 | | 40 |
| t | 4.00 | 3.68 | 3.21 | 2.84 | 2.54 | 2.29 | 2.08 | 1.91 | 1.75 | 1.62 | 1.50 | 1.40 | | | | 36 |
| | 4.00 | 3.63 | 3.17 | 2.80 | 2.51 | 2.26 | 2.06 | 1.88 | 1.73 | 1.60 | | | | | | 32 |
| | 4.00 | 3.53 | 3.08 | 2.72 | 2.44 | 2.20 | 2.00 | | | | | | | | | 26 |

Tiro in IV inserito*
Connected double wiring
Четверная запасовка подключаемая



* A richiesta
On request
** по требованию



DIN 15018 H1 B3
ISO 4301



IT Sollevamento - Variatore (Inverter)

UK Hoisting - Speed controller

RU Подъём - вариатор скорости

| | | | | | | | | | | | |
|---------------|-------|-------|------|------|-----------|----------|--|--|--|--|----|
| ASVF11 | | | | | | | | | | | |
| | II | m/min | 10 | 30 | 45 | 60 | | | | | kW |
| | 2 t | kg | 2000 | 2000 | 1400 | 800/1000 | | | | | 11 |
| | II | m/min | 10 | 22 | 35 | 50 | | | | | |
| 3 t** | kg | 3000 | 3000 | 1600 | 1000 | | | | | | 11 |
| IV* | m/min | 5 | 15 | 22 | 30 | | | | | | 11 |
| | kg | 4000 | 4000 | 2800 | 1600/2000 | | | | | | |

IT Potenza elettrica necessaria

UK Power requirement

RU Необходимая электрическая мощность

| | | |
|-----|----|----|
| V | Hz | kW |
| 380 | 50 | 25 |

IT Carrello - Variatore (Inverter)

UK Trolley - Speed controller

RU Тележка - вариатор скорости

| | | | | | | | | | | | |
|----------------|--|-------|----|----|----|----|--|--|--|--|-----|
| ACVF1.8 | | | | | | | | | | | |
| | | m/min | 10 | 20 | 30 | 40 | | | | | kW |
| | | | | | | | | | | | 1.8 |

IT Rotazione - Variatore (Inverter)

UK Slewing - Speed controller

RU Вращение - вариатор скорости

| | | | | | | | | | | |
|--|-----|-----|-----|-----|-----|-----|--|--|--|------|
| | | | | | | | | | | |
| | rpm | 0.1 | 0.3 | 0.5 | 0.8 | 6.5 | | | | daNm |

IT Composizione torre

UK Tower composition

RU структура башни

| Elementi torre Tower elements Элементы Башни | h 24 m | h 30 m | h 36 m | h 42 m | h 48 m | h 54 m Tronchetto Foundation Отпорный | h 54 m Carro Truck Основание | h 60 m | Peso elementi (kg) Elements weight (kg) Вес элементы (kg) |
|--|-----------|-----------|-----------|-----------|-----------|---|--|-----------|---|
| 150/12 1.15 x 1.15 x 11.60 m | 2 | 1 | 2 | 1 | | | | | 2200 |
| 150/12 1.15 x 1.15 x 5.80 m | | 1 | | 1 | | | | | 1200 |
| 150/15 1.15 x 1.15 x 11.60 m | | 1 | 1 | 1 | 3 | 2 | 2 | 2 | 2400 |
| 150/15 1.15 x 1.15 x 5.80 m | | | | | | 1 | 1 | | 1500 |
| 180/15 1.15 x 1.15 x 11.60 m | | | | 1 | | | | | 3100 |
| 180/15 1.15 x 1.60 x 11.60 m booster | | | | | 1 | 1 | 1 | 1 | 3500 |
| 180/15 1.60 x 1.60 x 11.60 m | | | | | | 1 | | 1 | 3700 |
| 180/15 1.60 x 2.30 x 11.60 m booster | | | | | | | 1 | 1 | 4700 |

IT Zavorre di volata

UK Jib ballast

RU Балластные блоки контрстрелы

| | | | | | | |
|-------------------------------|---|------|-----|------|------|------|
| Braccio Jib Стрела | m | 26 | 32 | 36 | 40 | 42 |
| Zavorra Ballast Балласт | t | 7.15 | 7.8 | 10.0 | 11.1 | 11.1 |

IT Zavorre di base

UK Base ballast

RU Балластные блоки основания

| Carro Truck Крестовидное основание | Altezza Height Высота | Zavorra Ballast Балласт |
|---|-----------------------------|-------------------------------|
| m | m | t |
| 2.8x2.8 | 12-18-24 | 36.8 |
| 2.8x2.8 | 30 | 46.0 |
| 2.8x2.8 | 36 | 64.4 |
| 3.2x3.2 | 12-18-24 | 30.0 |
| 3.2x3.2 | 30 | 40.0 |
| 3.2x3.2 | 36 | 55.0 |
| 3.8x3.8 | 12-18-24 | 25.0 |
| 3.8x3.8 | 30 | 30.0 |
| 3.8x3.8 | 36 | 40.0 |
| 3.8x3.8 | 42 | 55.0 |

Strutture in acciaio ad alta resistenza per impiego a basse temperature • Braccio e torre a montaggio modulare • Bassa emissione acustica e livello di potenza sonora garantito e certificato • Climatizzazione termostatica dell'equipaggiamento elettrico per alte e basse temperature • Mezzi di accesso alla parte superiore della gru • Anemometro con segnalatore ottico e acustico

High-strength steel structure for use at low temperatures • Modular assembly jib and tower • Guaranteed and certified low acoustics emission and sound powers level • Automatic temperature control of electrical equipment for high and low temperatures • Disassembled stair on the tower • Anemometer with optical and acoustic indicator

Структуры из стали высокой прочности для применения при низких температурах • Стрела и башня модульного монтажа • Акустическая эмиссия и уровень мощности шума гарантированный и сертифицированный • Термостатическая климатизация электрооборудования при высоких и низких температурах • Средства доступа к высоким частям крана • Анемометр с оптическим и акустическим сигналом

IT

Conforme alle direttive 98/37/CE direttiva macchine • Conforme alle direttive 87/405/CEE, 2000/14/CE e 2005/88/CE livello acustico • Conforme alle direttive 89/336/CEE compatibilità magnetica • Conforme alle direttive 73/23/CEE bassa tensione • Conforme al D.P.R. 27-4-55 n. 547 • Le nostre macchine sono protette da assicurazione per responsabilità civile prodotti senza termine • Specifiche suscettibili di variazioni senza preavviso.

UK

In compliance with the 98/37/EC regulations • In compliance with the 87/405/EEC, 2000/14/EC and 2005/88/EC regulations on noise levels • In compliance with the 89/336/EEC regulations on electromagnetic compatibility • In compliance with the 73/23/EEC regulations on electrical equipment • Machine covered by lifetime public liability insurance coverage • Specifications subject to modification without notice.

RU

В соответствии с нормами 98/37/CE директива машины • В соответствии с нормами 87/405/CEE, 2000/14/CE и 2005/88/CE уровень акустики • В соответствии с нормами 89/336/CEE магнетическое соответствие • В соответствии с нормами 73/23/CEE низкое напряжение • Наши краны защищены неограниченной страховкой от гражданской ответственности. • Технические параметры могут подлежать изменениям без предупреждения.



SAN MARCO INTERNATIONAL S.r.l.

Via Principe Umberto, 42/B
28021 Borgomanero (NO) Italy

Tel. +39 0322 82601
Fax +39 0322 846035
Website www.sanmarco-int.com
E-mail sanmarco@sanmarco-int.com

Timbro rivenditore • Reseller stamp • Реквизиты дистрибьютора