

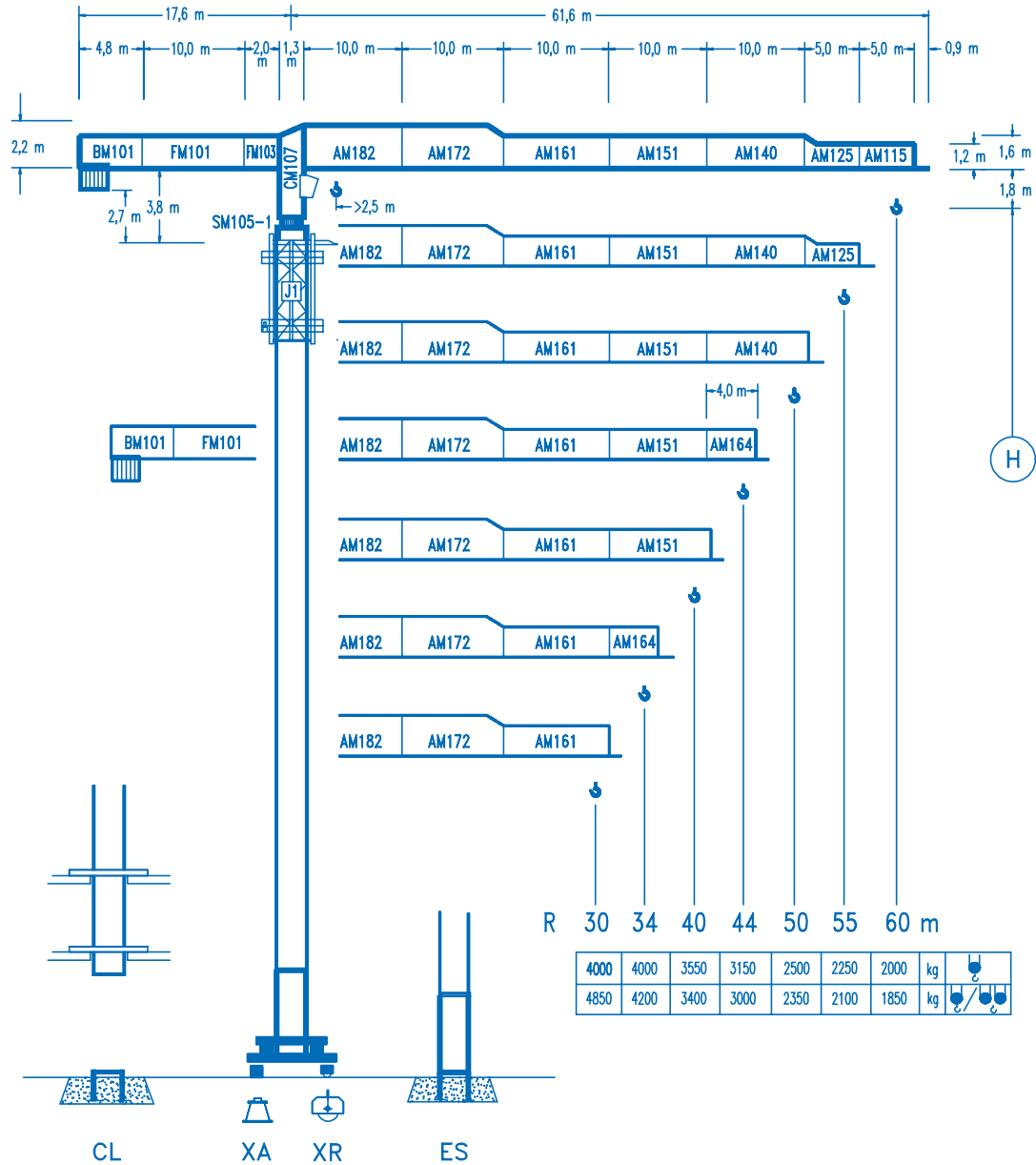


COMANSA

LINDEN 1000

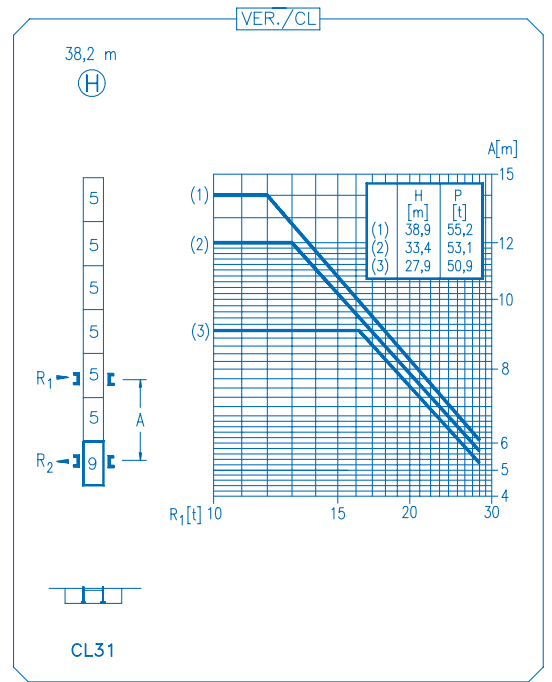
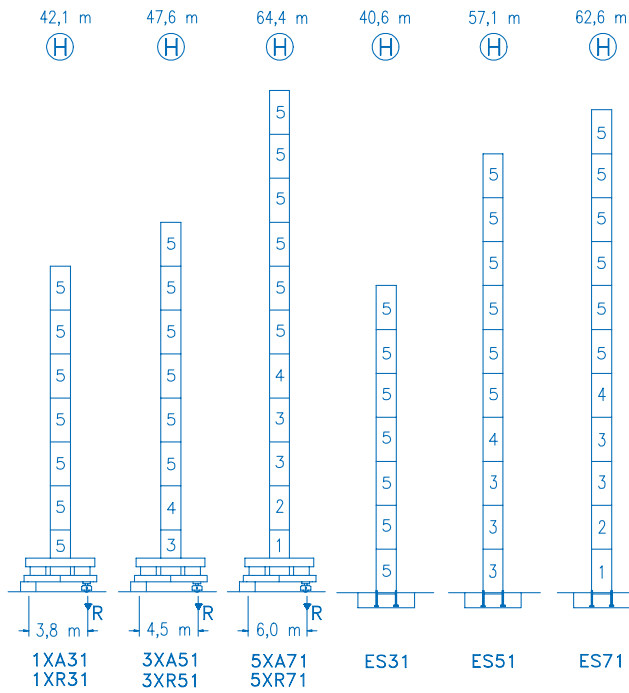
10 LC 140

8 t



CE
DIN 15018 H1 B3

R		R _(Cmax)	C _{max}	25	30	34	40	44	50	55	60	
60		33,1 m	4000	4000	4000	3885	3230	2895	2490	2225	2000	
		17,5 m	8000	5365	4350	3775	3095	2750	2345	2075	1850	
55		33,5 m	4000	4000	4000	3930	3270	2930	2520	2250		
		17,7 m	8000	5420	4395	3795	3125	2785	2375	2100		
50		33,2 m	4000	4000	4000	3900	3240	2905	2500			
		17,5 m	8000	5375	4355	3765	3100	2760	2350			
44		35,6 m	4000	4000	4000	4000	3515	3150				
		18,8 m	8000	5805	4715	4080	3365	3000				
40		36,0 m	4000	4000	4000	4000	3550					
		18,9 m	8000	5860	4760	4120	3400					
34		34,0 m	4000	4000	4000	4000						
		19,2 m	8000	5970	4850	4200						
30		30,0 m	4000	4000	4000							
		19,2 m	8000	5970	4850							



R. máx.	En servicio	1XR31 74,0 t
	In operation	3XR51 71,9 t
	En service	5XR71 82,4 t
	In Betrieb	

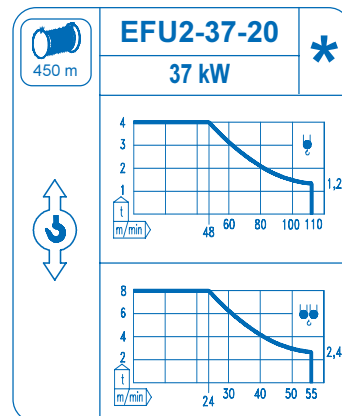
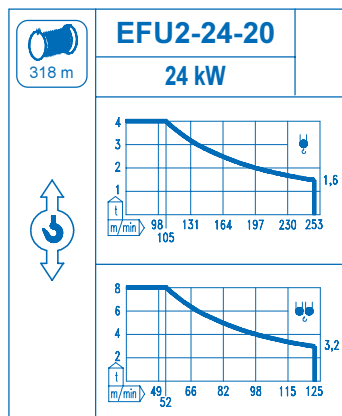
R. máx.	Fuera de servicio	1XR31 81,7 t
	Out of service	3XR51 89,4 t
	Hors service	5XR71 125,4 t
	Ausser Betrieb	

CFU-4.0
4 kW
0 ⇄ 66 m/min

GR-7.5
2 x 75 Nm
0 ⇄ 0,7 rpm

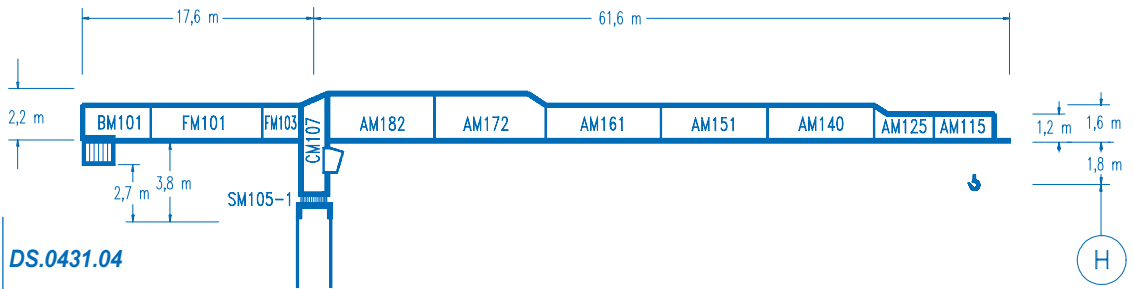
TS2-5.5 | **TRA-7.5**
2 x 55 Nm | 2 x 75 Nm
0 ⇄ 20 m/min
1XR31 | 3XR51 | 5XR 71

TRA-7.5VC
2 x 75 Nm
0 ⇄ 20 m/min
5XR71



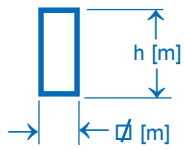
Tensión de alimentación	400 V
Operating voltage	3 ph
Tension de service	50 Hz
Betriebsspannung	

Opcional	*
Optional	
En option	
Kaufoption	

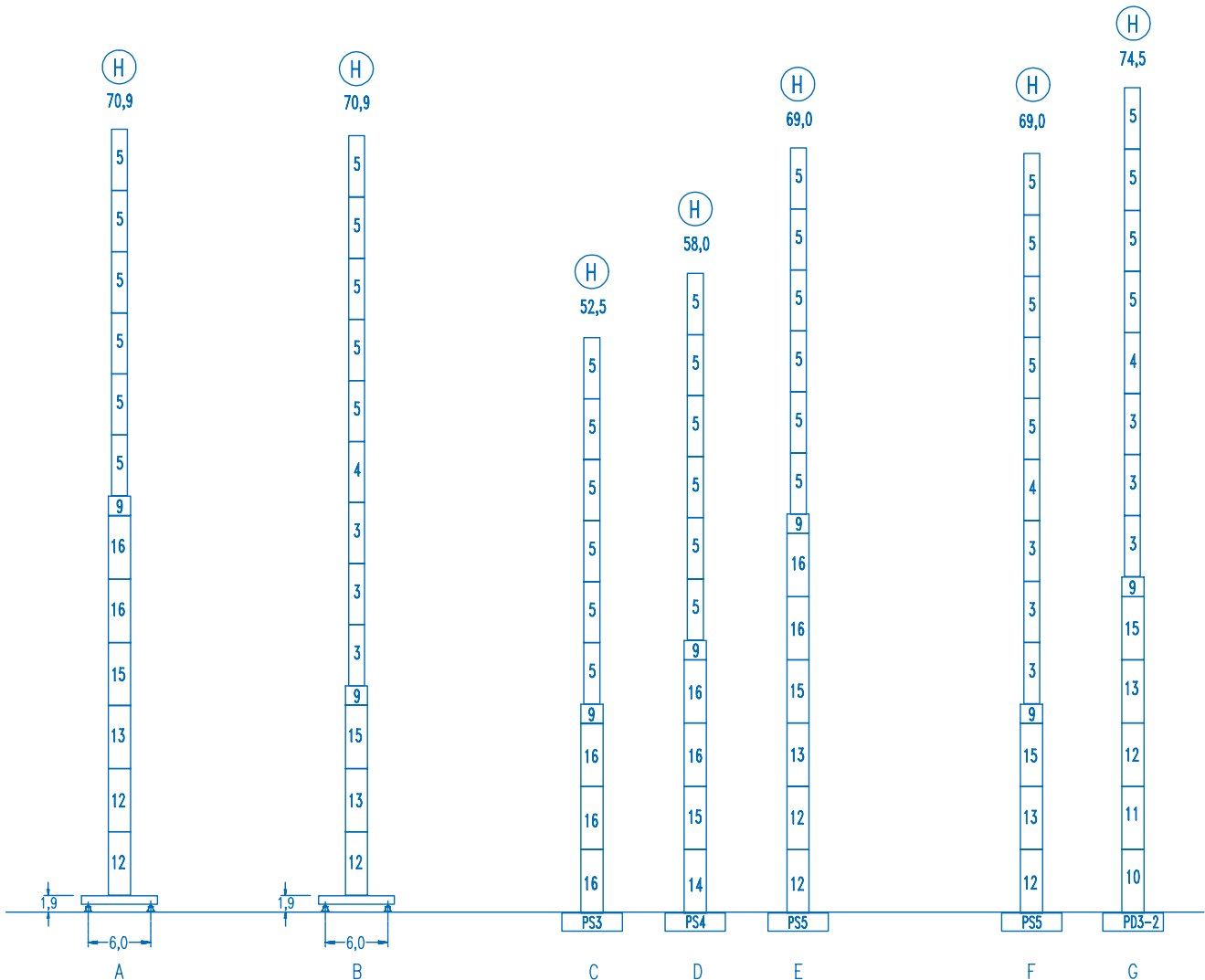


Configuraciones ver
Configuration see
Configurations voyez
Komponenten siehe

DS.0431.04



n°	Ref.	ø	h	n°	Ref.	ø	h	n°	Ref.	ø	h	n°	Ref.	ø	h
3	S14	1,6	5,5	9	TMS23	2,0	1,0	12	S25	2,0	5,5	15	TS24	2,0	5,5
4	TS14	1,6	5,5	10	D23	2,0	5,5	13	TS25	2,0	5,5	16	S23	2,0	5,5
5	S13	1,6	5,5	11	TD23A	2,0	5,5	14	S24	2,0	5,5				



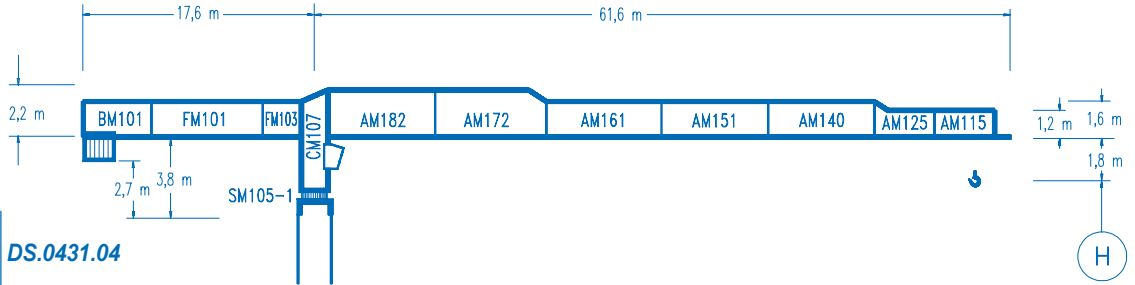


COMANSA

LINDEN 1000

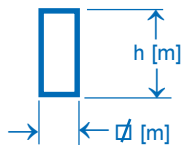
10 LC 140

2,5 m

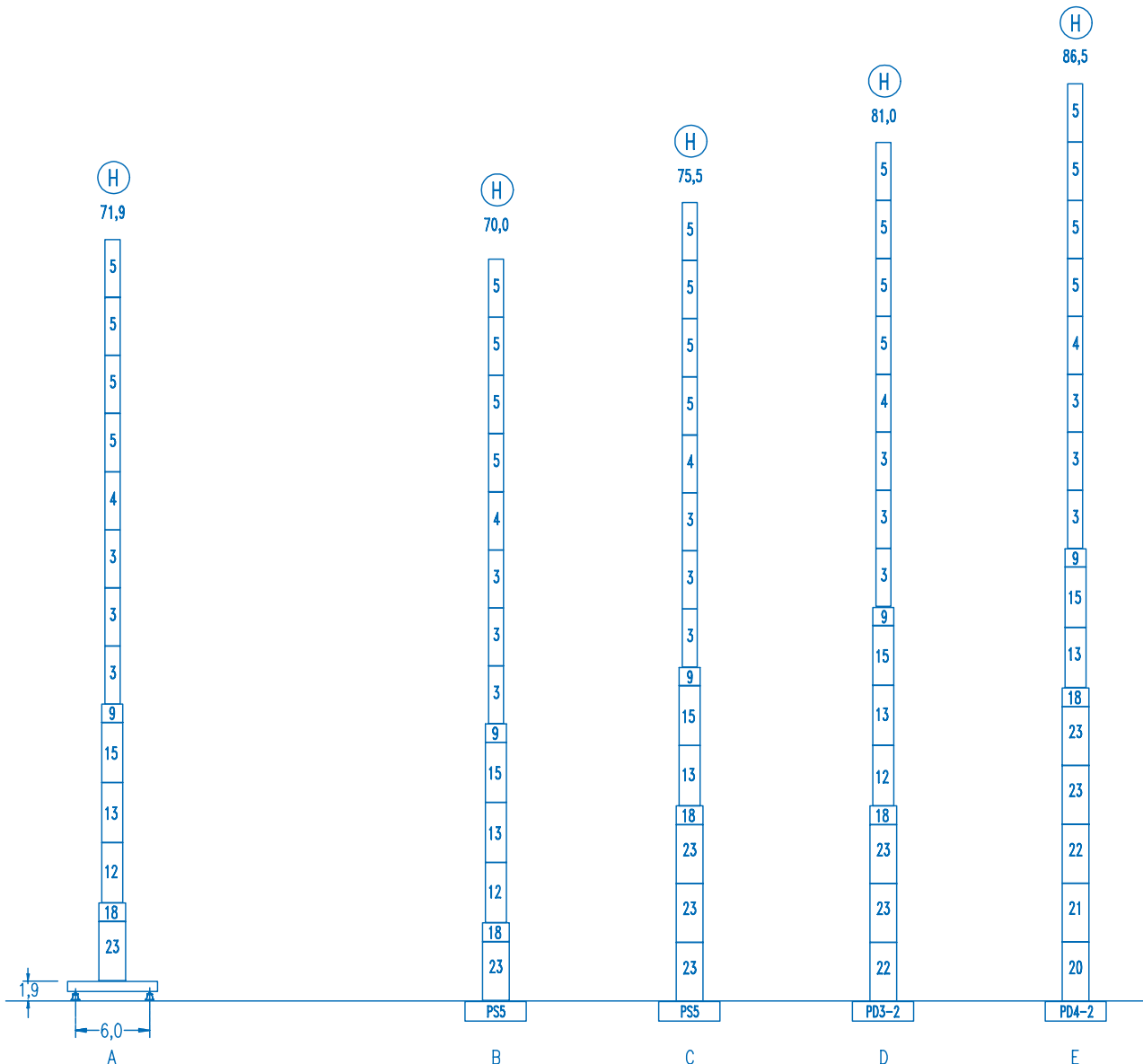


Configuraciones ver
Configuration see
Configurations voyez
Komponenten siehe

DS.0431.04



n°	Ref.	∅	h	n°	Ref.	∅	h	n°	Ref.	∅	h	n°	Ref.	∅	h
3	S14	1,6	5,5	9	TMS23	2,0	1,0	14	S24	2,0	5,5	20	TD34	2,5	5,5
4	TS14	1,6	5,5	12	S25	2,0	5,5	15	TS24	2,0	5,5	21	D33	2,5	5,5
5	S13	1,6	5,5	13	TS25	2,0	5,5	18	TMS35	2,5	1,0	22	TD33A	2,5	5,5
												23	S35	2,5	5,5



DS.0432.08

09/04

Reserva de modificaciones.- Subject to modifications.- Modifications réservées.- Konstruktionsänderungen vorbehalten.

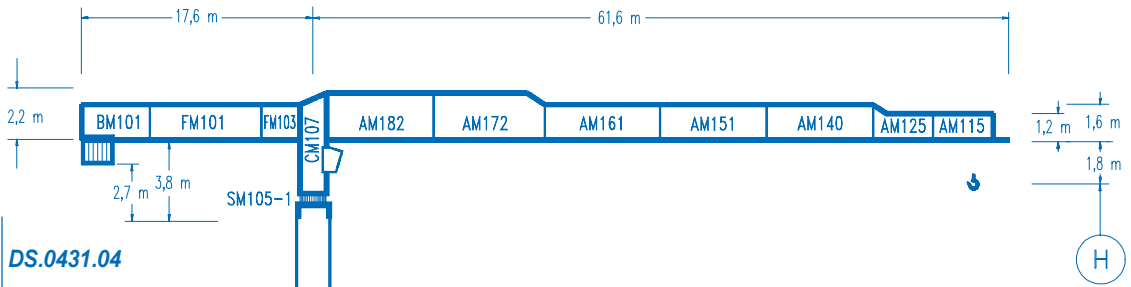


COMANSA

LINDEN 1000

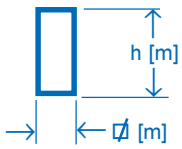
10 LC 140

Ø 2,0 m

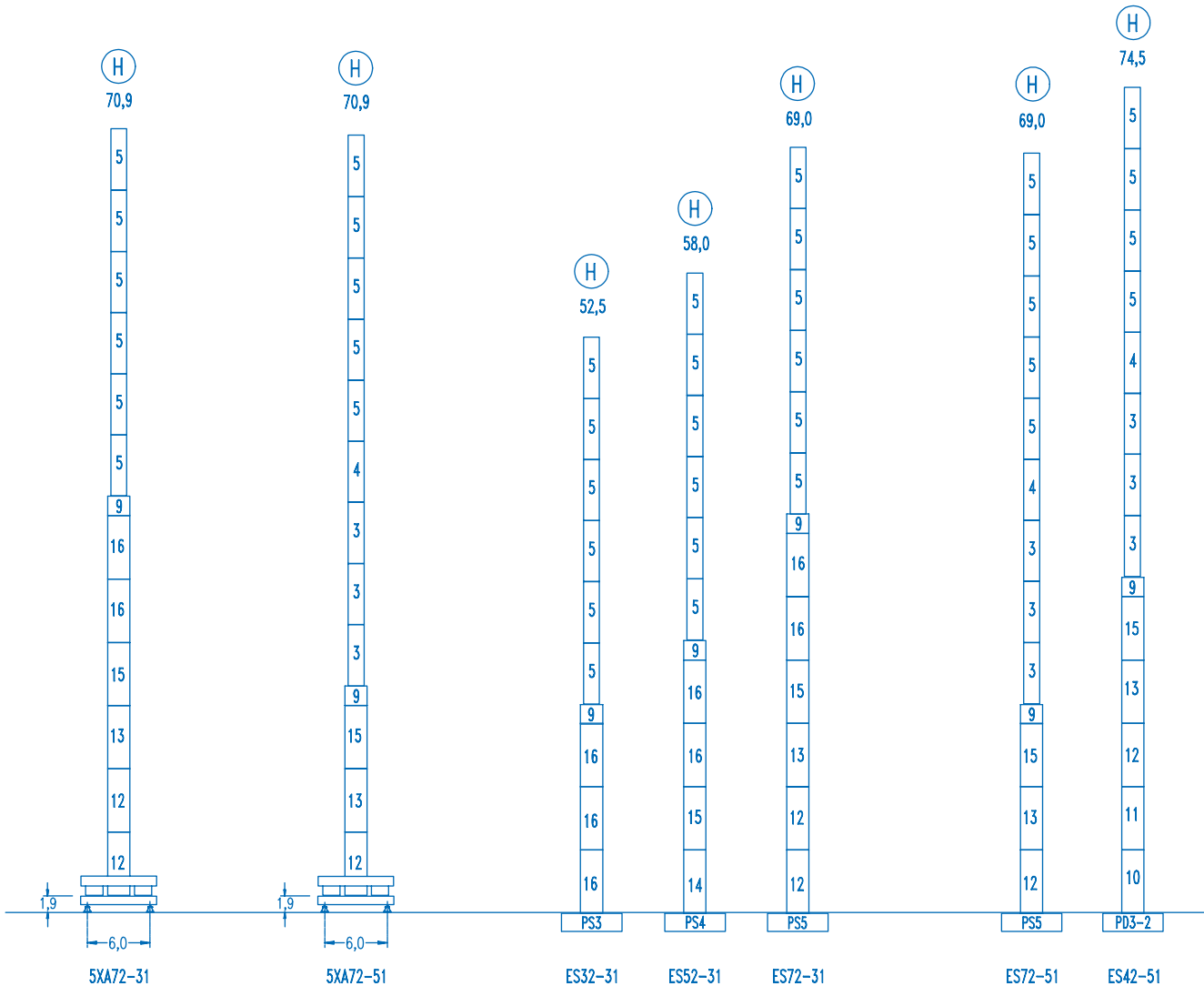


Configuraciones ver
Configuration see
Configurations voyez
Komponenten siehe

DS.0431.04



n°	Ref.	Ø	h	n°	Ref.	Ø	h	n°	Ref.	Ø	h	n°	Ref.	Ø	h
3	S14	1,6	5,5	9	TMS23	2,0	1,0	12	S25	2,0	5,5	15	TS24	2,0	5,5
4	TS14	1,6	5,5	10	D23	2,0	5,5	13	TS25	2,0	5,5	16	S23	2,0	5,5
5	S13	1,6	5,5	11	TD23A	2,0	5,5	14	S24	2,0	5,5				



DS.0432.08

09/05

Reserva de modificaciones.- Subject to modifications.- Modifications réservées.- Konstruktionsänderungen vorbehalten.

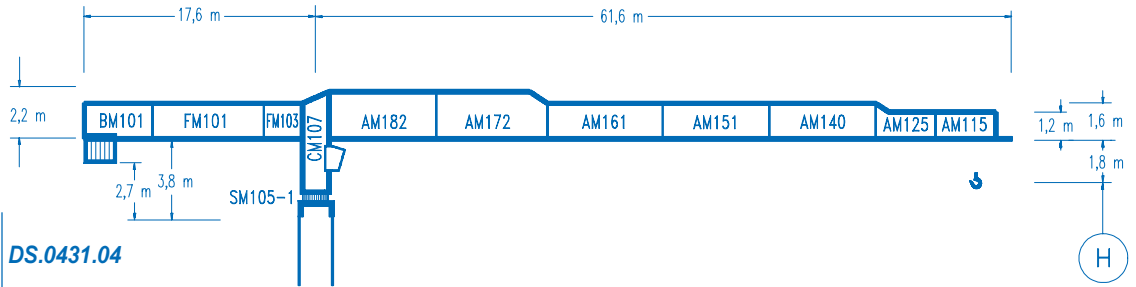


COMANSA

LINDEN 1000

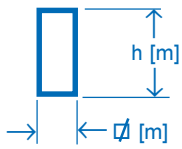
10 LC 140

∅ 2,5 m

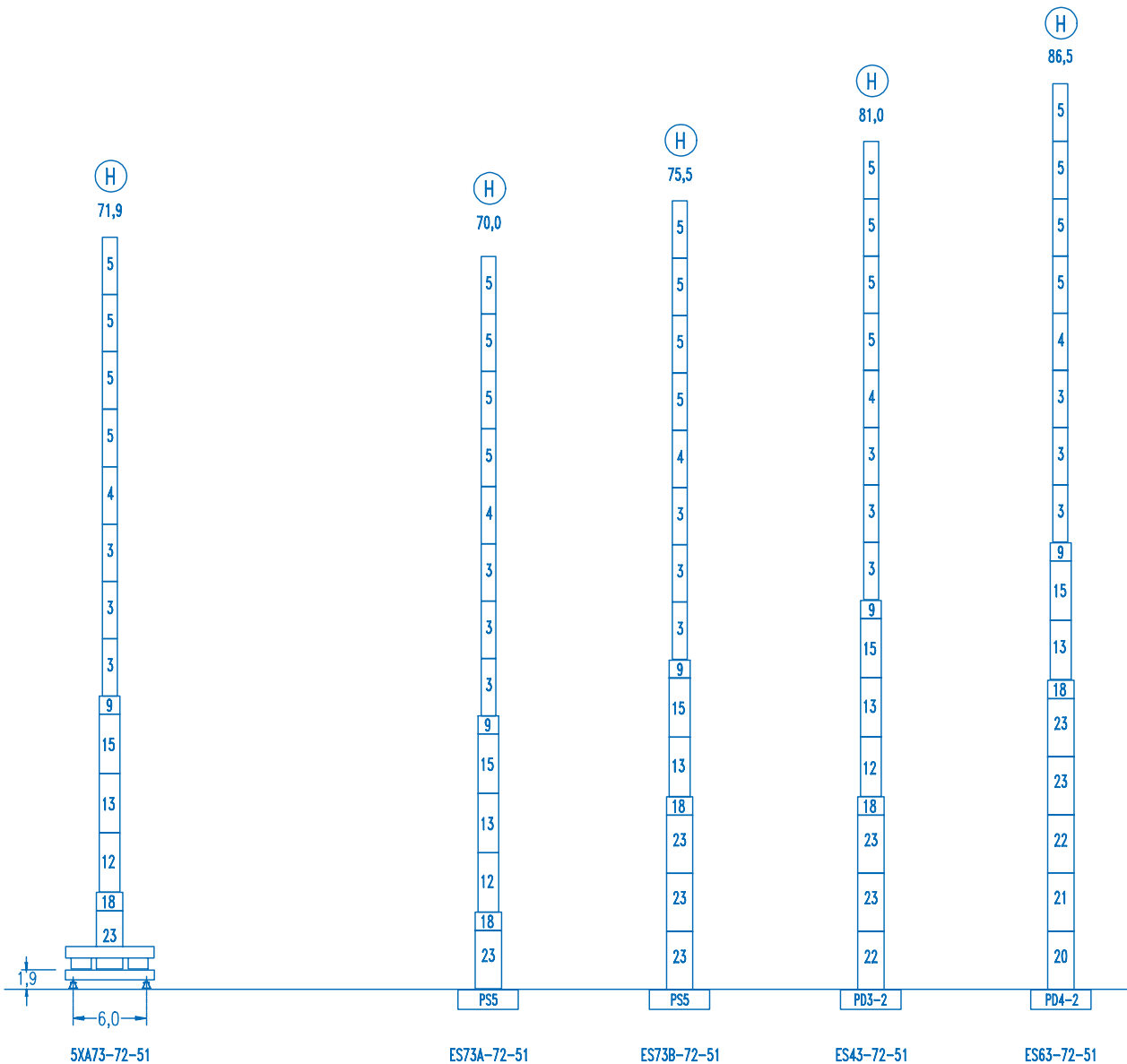


Configuraciones ver
Configuration see
Configurations voyez
Komponenten siehe

DS.0431.04



n°	Ref.	∅	h	n°	Ref.	∅	h	n°	Ref.	∅	h	n°	Ref.	∅	h
3	S14	1,6	5,5	9	TMS23	2,0	1,0	14	S24	2,0	5,5	20	TD34	2,5	5,5
4	TS14	1,6	5,5	12	S25	2,0	5,5	15	TS24	2,0	5,5	21	D33	2,5	5,5
5	S13	1,6	5,5	13	TS25	2,0	5,5	18	TMS35	2,5	1,0	22	TD33A	2,5	5,5
												23	S35	2,5	5,5



DS.0432.08


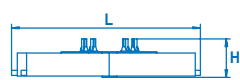
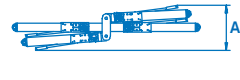
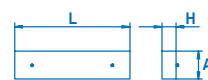
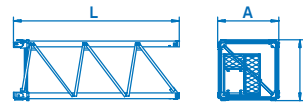
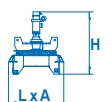
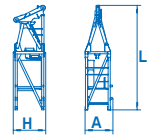
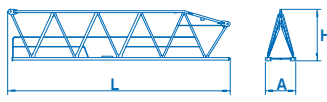
09/05

Reserva de modificaciones.- Subject to modifications.- Modifications réservées.- Konstruktionsänderungen vorbehalten.



COMANSA

LINDEN 1000

Designación Designation Designation Benennung	Código Code Code Code	Dimensiones / Measurements Dimensions / Abmessungen [m]			Peso Weight Poids Gewicht [kg]
		L	A	H	
Pie de empotramiento Fixing angles Pattes de scellement Fundamentanker	 PS3	1,55	0,40	0,40	(4x) 120
	PS4	1,98	0,40	0,40	(4x) 190
	PS5	1,98	0,40	0,40	(4x) 220
Base en cruz Cross-base Base en croix Kreuzrahmen	 X2	5,35	1,00	1,35	4500
	acc. trasl.	5,35	1,00	1,35	5500
	 X3	6,55	1,00	1,55	6400
	acc. trasl.	5,35	1,00	1,55	8000
	X5	9,00	1,80	2,00	11000
acc. trasl.	9,00	1,80	2,00	17000	
Lastre Base ballast Lest de base Ballast	 4700 kg	4,00	1,00	0,50	4700
	5400 kg	4,50	1,00	0,50	5400
	6750 kg	6,25	1,50	0,60	6750
Tramo de torre Mast section Element de tour Turmmodul	 S11	5,75	1,70	1,70	1770
	TS12	5,75	1,70	1,70	2030
	S12	5,75	1,70	1,70	2030
	S13	5,75	1,70	1,70	2200
	TS14	5,75	1,70	1,70	2350
	S14	5,75	1,70	1,70	2350
	TS15	5,75	1,70	1,70	3000
	S15	5,75	1,70	1,70	3000
	Parte giratoria Slewing part Partie giratoire Drehbare Bühne	 SM101-1	2,00	1,95	2,20
SM103-1		2,00	1,95	2,20	3100
SM105-1		2,00	1,95	2,20	3350
Cúspide Cat head Tete de tour Turmspitze	 CM101	4,50	1,40	1,60	1600
	CM107	5,15	1,40	1,60	1900
	plat. cab.	2,30	1,70	0,35	250
	cab.	1,70	1,40	2,30	500
Tramo de pluma Jib section Element de fleche Auslegermodul	 AM190	10,25	1,20	1,80	2180
	AM182	10,25	1,20	2,30	2150
	AM180	10,25	1,20	1,80	1920
	AM172	10,25	1,20	2,30	1800
	AM170	10,25	1,20	1,80	1850
	AM164	4,10	1,20	1,80	190
	AM161	10,25	1,20	1,80	1420
	AM151	10,25	1,20	1,80	1000
	AM145	5,20	1,20	1,80	270
	AM140	10,25	1,20	1,80	640
	AM132	10,20	1,20	1,80	400
	AM125	5,20	1,20	1,70	270
	AM115	5,15	1,20	1,30	230
AM101	1,20	1,20	0,80	110	



COMANSA

LINDEN 1000

Designación Designation Benennung	Código Code Code	Dimensiones / Measurements Dimensions / Abmessungen [m]			Peso Weight Poids Gewicht [kg]
		L	A	H	
Carro Trolley Chariot Laufkatze	TLC03	1,40	1,40	0,80	170
	TLC06	1,40	1,40	0,85	220
	TLC08 (SR)	1,70	1,40	0,75	190
	TLC08 (DR)	1,70	1,40	0,90	325
Gancho Hook Crochet Haken	GA03.0	1,50	1,30	0,40	175
	GA06,0	1,70	1,30	0,40	200
	GA08.0 (SR)	1,50	1,30	0,40	230
	GA08.0 (DR)	1,70	1,30	0,40	270
Tramo de contrapluma Counterjib section Element de contrefleche Gegenauslegermodul	FM101	10,25	1,30	1,80	2120
	FM103	2,30	1,30	1,80	580
	BM101	5,10	2,30	1,85	4000
Contrapeso Counterweight Contrepoids Gegengewicht Block	1900 kg	2,70	1,50	0,30	1900
	850 kg	2,70	0,30	0,44	850
	425 kg	2,70	0,30	0,22	425
Tramo trepador Climbing section Element de telescopage Klettermodul	J1	9,90	2,10	2,30	5200
Marco arriostramiento Tie frame Cadre Abspannrahmen	MA01	2,25	2,25	0,40	670

Alturas especiales / Special heights / Spéciaux hauteurs / Extra Höhen

Pie de empotramiento Fixing angles Pattes de scellement Fundamentanker	PD3-2	2,20	0,50	0,50	(4x) 275
	PD4-2	2,20	0,50	0,50	(4x) 325
Tramo de torre Mast section Element de tour Turmmodul	S23	5,75	2,10	2,10	2560
	TS24	5,75	2,10	2,10	2950
	S24	5,75	2,10	2,10	2950
	TS25	5,75	2,10	2,10	3325
	S25	5,75	2,10	2,10	3325
	TD23A	5,75	2,10	2,10	4125
	D23	5,85	2,10	2,10	4175
	S35	5,75	2,60	2,60	3700
	TD33A	5,75	2,60	2,60	4320
	D33	5,85	2,60	2,60	4400
TD34	5,85	2,60	2,60	5000	
Marco transición Transition mast Cadre transition Zwischenhalterahmen	TMS23	2,10	2,10	1,30	2000
	TMS35	2,60	2,60	1,40	2600